

Yarra Park Water Recycling Facility – Helping achieve a liveable and sustainable Melbourne

Integrated Water Management for Victoria, Sustainable Engineering Society
October 2013

Rhys Anderson
rhys.anderson@arup.com

Agenda

1. Introduction to Arup
2. Design with Water
3. Yarra Park Water Recycling Facility
4. The Future of Melbourne's Water

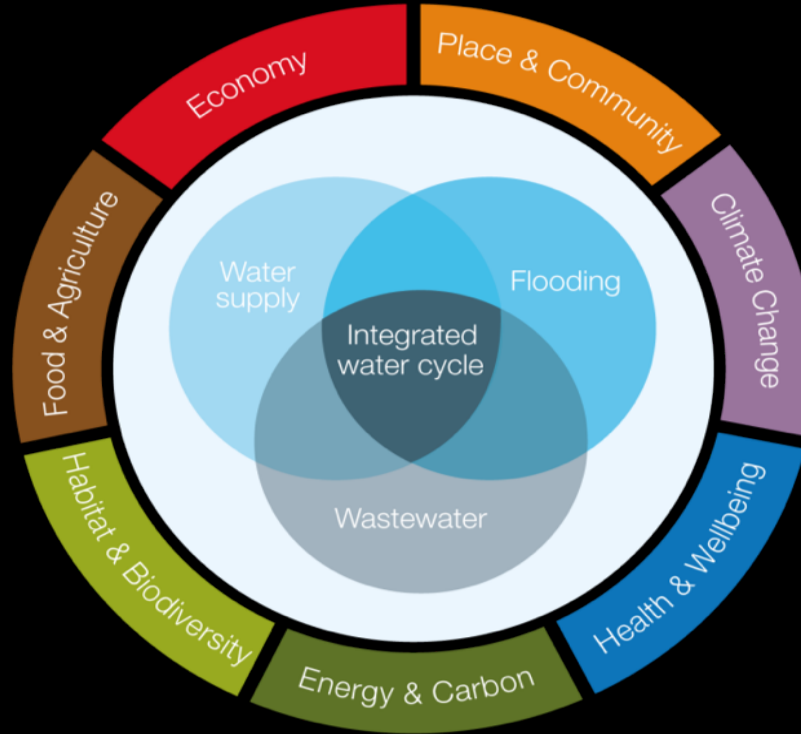
Our global presence



Arup is the creative force at the heart of many of the world's most prominent projects in the built environment. From 90 offices in 38 countries our 11,000 planners, designers, engineers and consultants deliver innovative projects across the world with creativity and passion.

Design with water

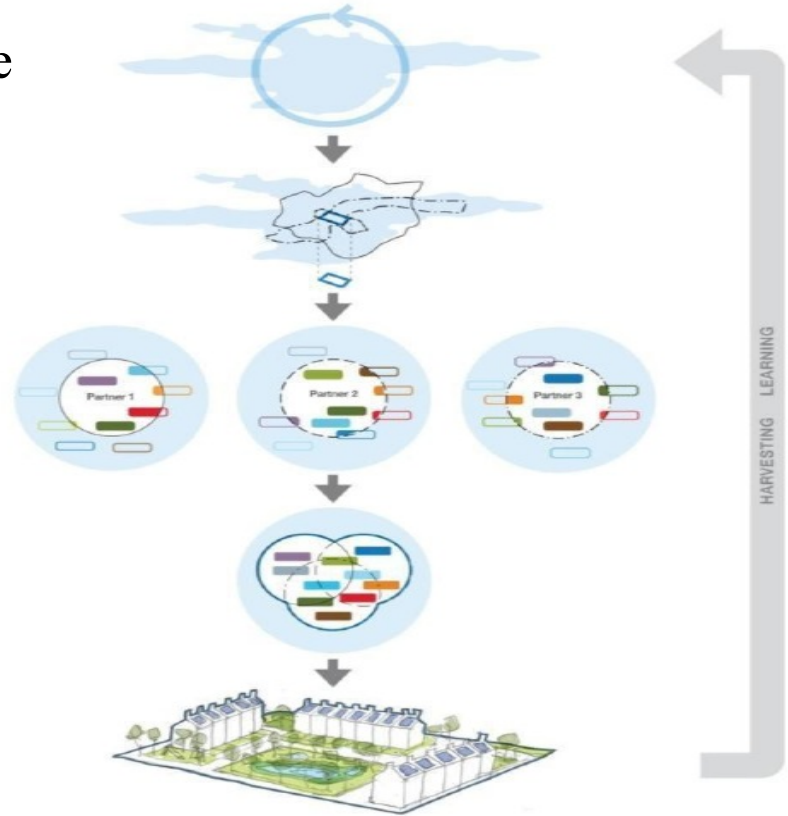
Framework of understanding



Design with water

Holistic approach at catchment scale

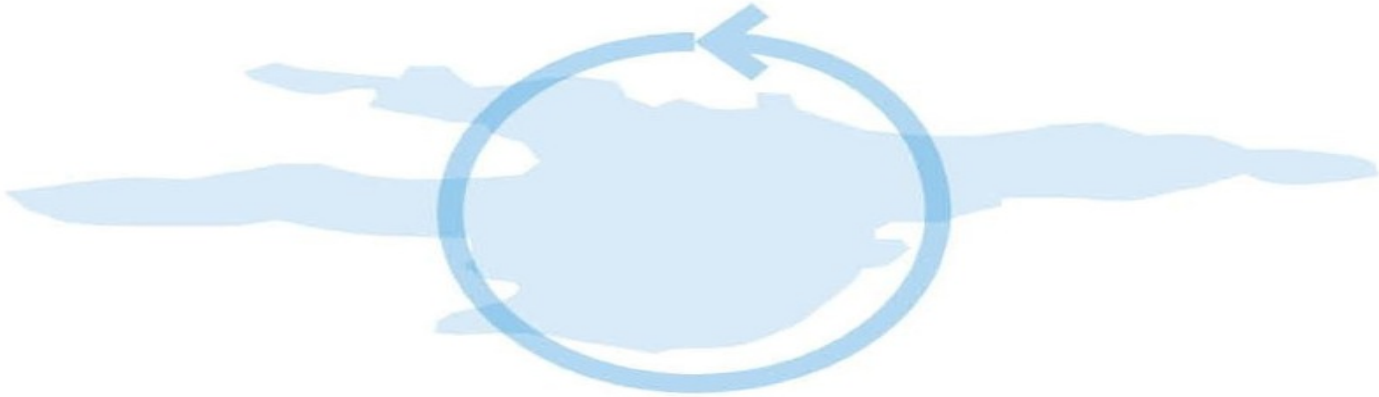
- 1 Understand water cycle at catchment scale
- 2 Align with other development needs
- 3 Identify partners
- 4 Build a shared case for action
- 5 Delivery, maintenance, learning



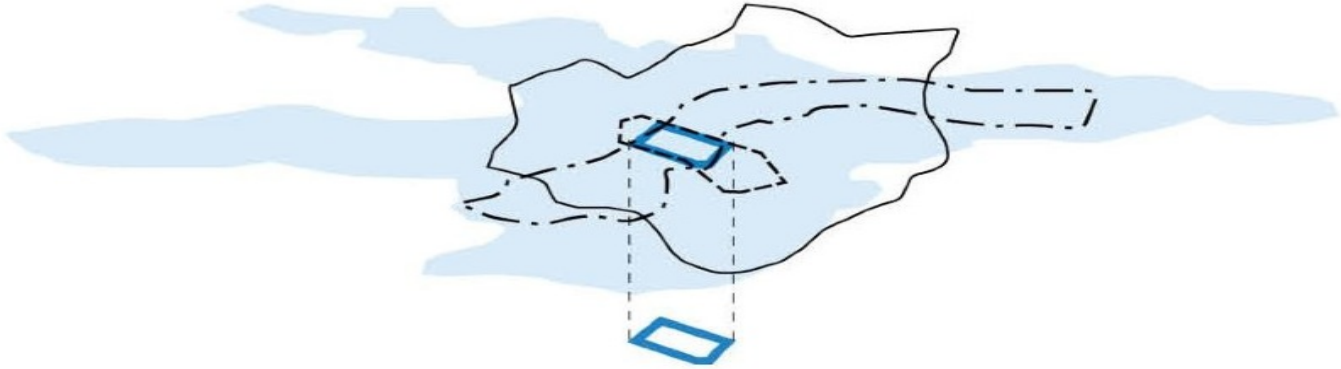
Design with water

Water cycle and catchment

1 Understand water cycle at catchment scale



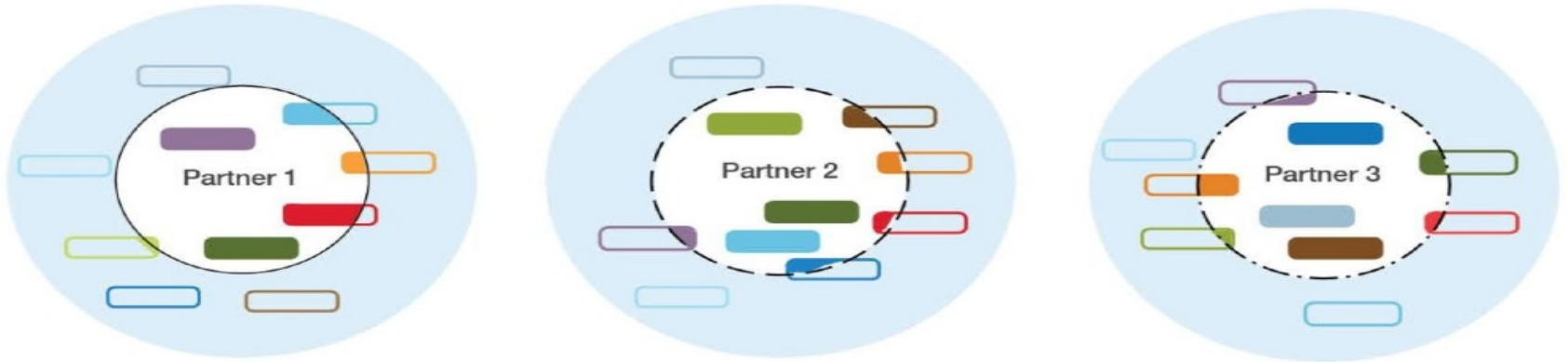
2 Align with other development needs



Design with water

Partners and priorities

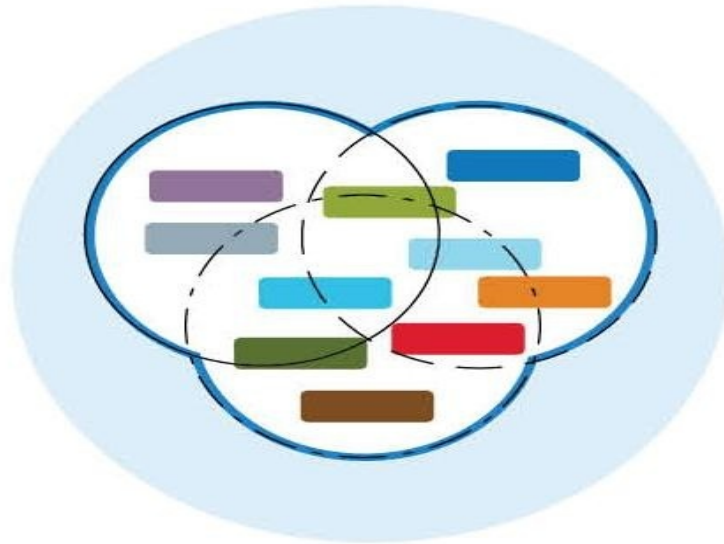
3 Identify potential partners and understand their priorities



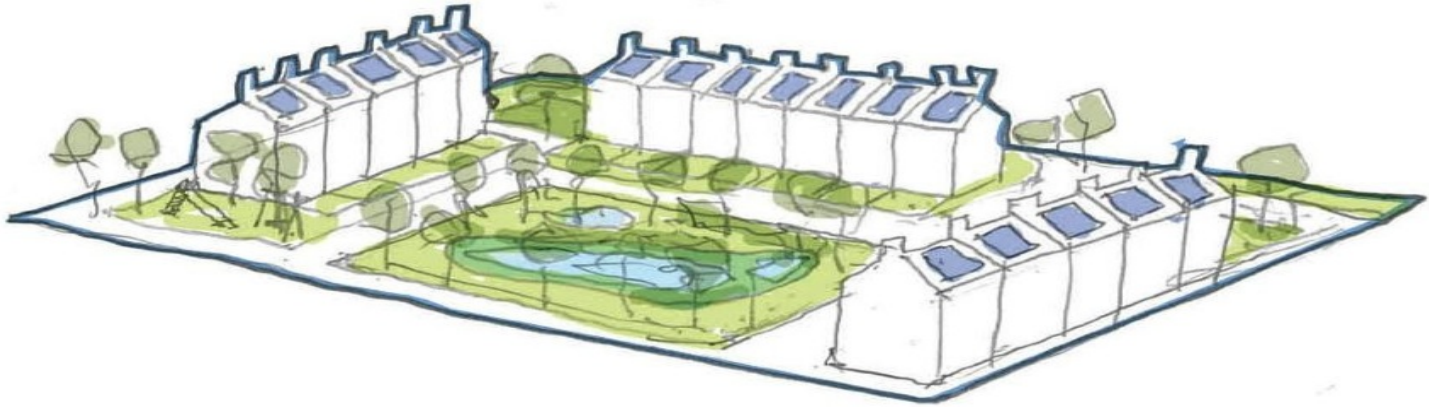
Design with water

Synergistic benefits

4 Build a shared case for action



5 Delivery, maintenance, learning



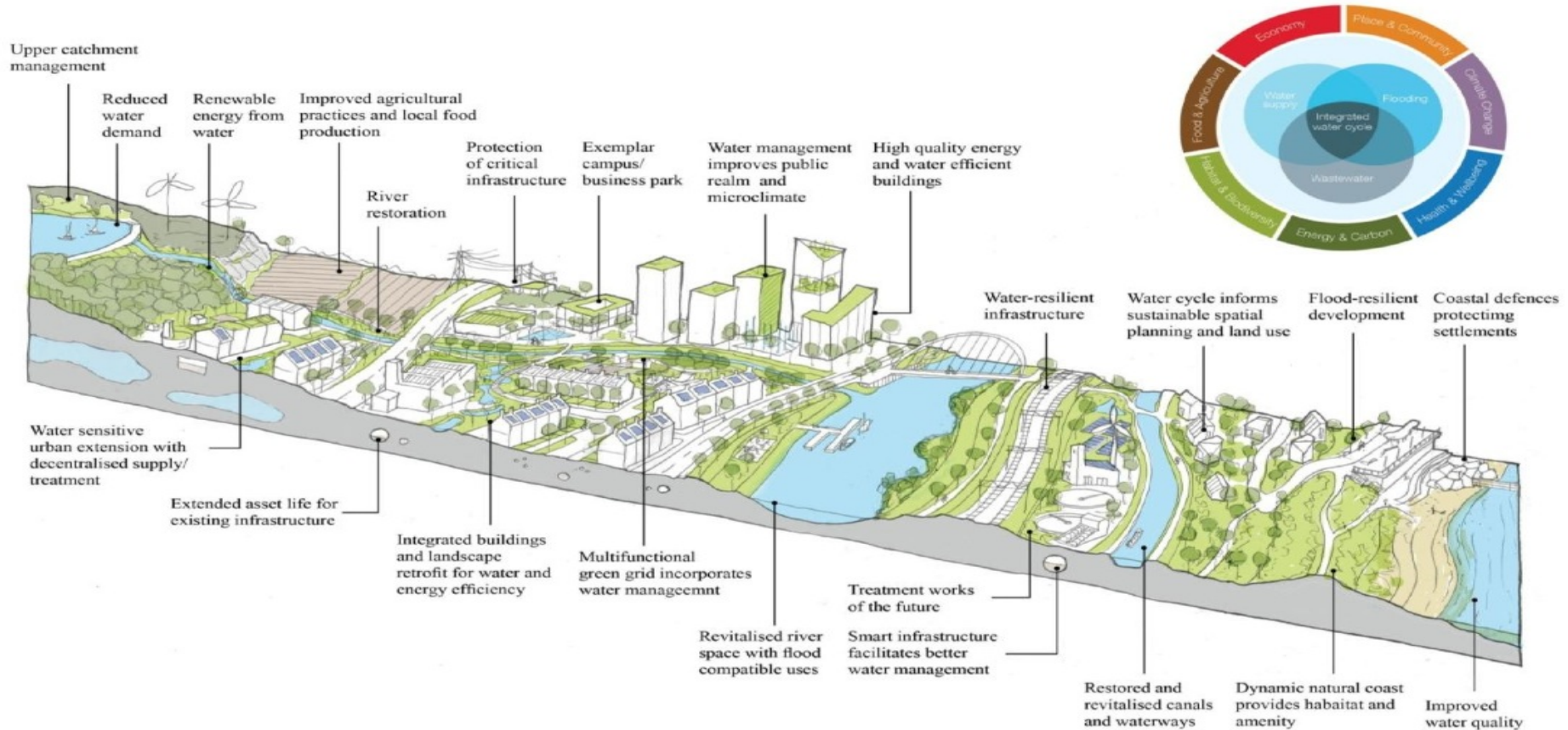
Design with water
Examples of best practice

Conceptual model

Integrated elements not discretely separate

Design with water

Conceptual model





Yarra Park Water Recycling Facility

Location: Melbourne Cricket Ground, East Melbourne



Design with water

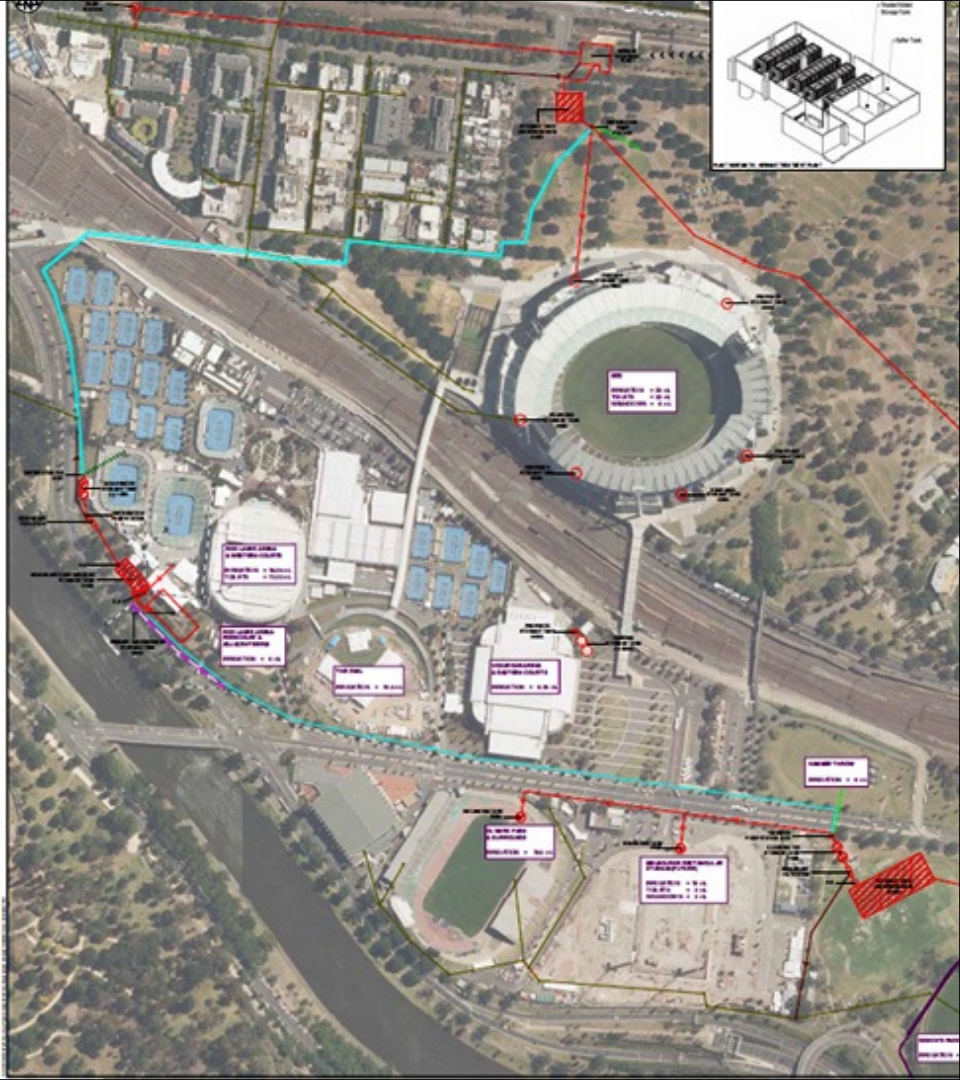
Yarra Park Water Recycling Facility

Melbourne Cricket Club became the agents of Yarra Park in 2008

Commitment to restoring Yarra Park to pre-drought condition

Scheme was outcome of Whole of Water Cycle Management Strategy undertaken in 2008 for DPCD

MCC took the idea forward to provide an alternative water supply to the park



Design with water

Yarra Park Water Recycling Facility

MCC are the owners and scheme managers

Water is used for irrigation of Yarra Park and toilet flushing within the ground

Water is gifted to Richmond Football Club for irrigation of oval

A lot of work to enable MCC to gift water to RFC – crossing boundaries

900,000 Litres of Class A water was supplied for toilet flushing on Grand Final day



Design with water

Future of Melbourne's Water

- 1 Resilience of the Park and the MCG
- 2 Align with others needs
- 3 Support liveable communities
- 4 Build a shared case for action
- 5 Delivery, maintenance, learning



Design with water

Future of Melbourne's Water

- 1 Opportunities for new entries to the market
- 2 Educating the community on water cycle
- 3 Reduce the flows and loads downstream = cost savings
- 4 Localised treatment and delivery = reducing the cost of transfer
- 5 Melbourne's world class sporting grounds



Questions

