

# Melbourne's Water Future

[livingvictoria.vic.gov.au](http://livingvictoria.vic.gov.au)

A smarter way  
to manage our water

Office of  
Living Victoria





A photograph showing a large, silver, segmented industrial water pipe running parallel to a body of water. The pipe is supported by a concrete structure. To the right of the pipe is a gravel path with a metal railing. A person wearing a high-visibility vest is walking on the path in the distance. The background shows a calm body of water under a clear sky.

# Business as usual

Image courtesy of Melbourne Water

# Drought 1997 – 2009



Image courtesy of Melbourne Water



# Desalination





# Population growth





# Urban flooding



Image Fairfax



# Waterways polluted and eroded





# Long distance transport

61.9km







Whole of water cycle



# Our opportunity

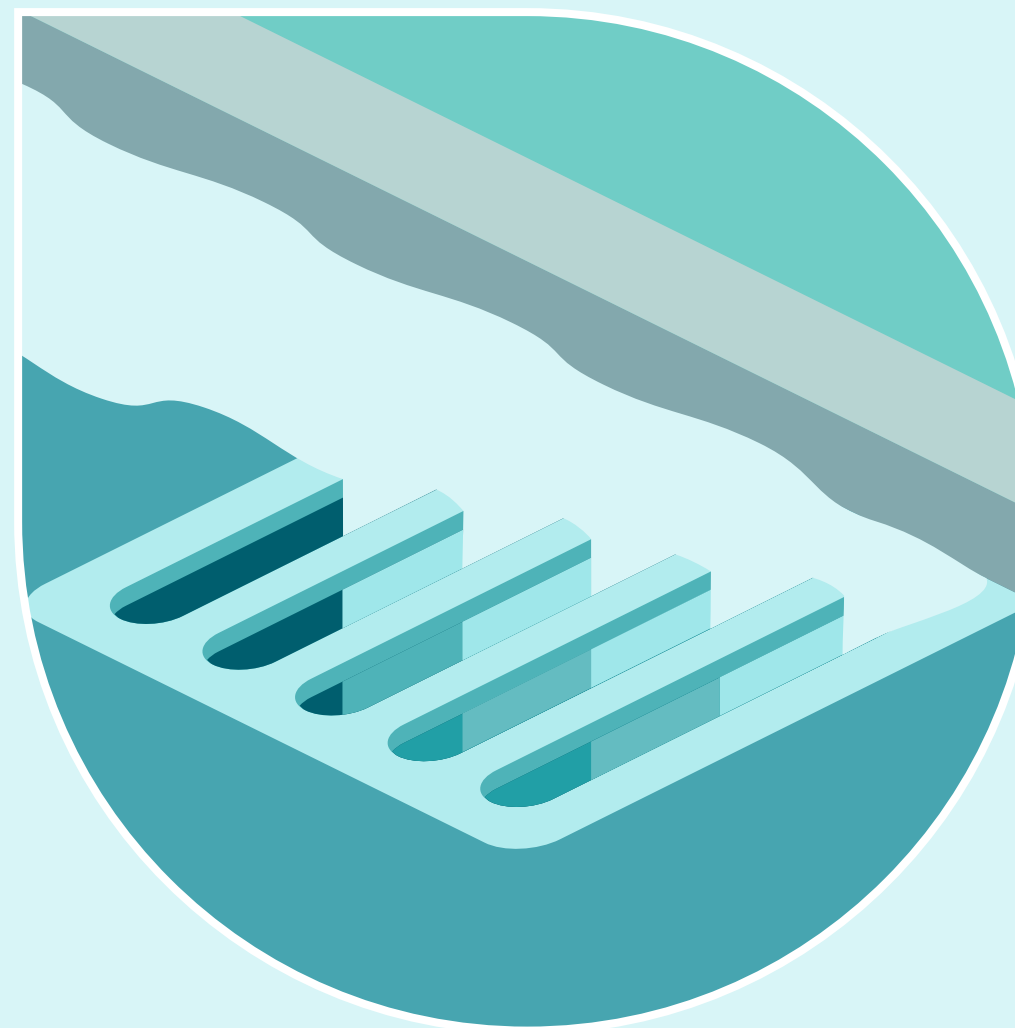
Mains water  
demand

**374GL**



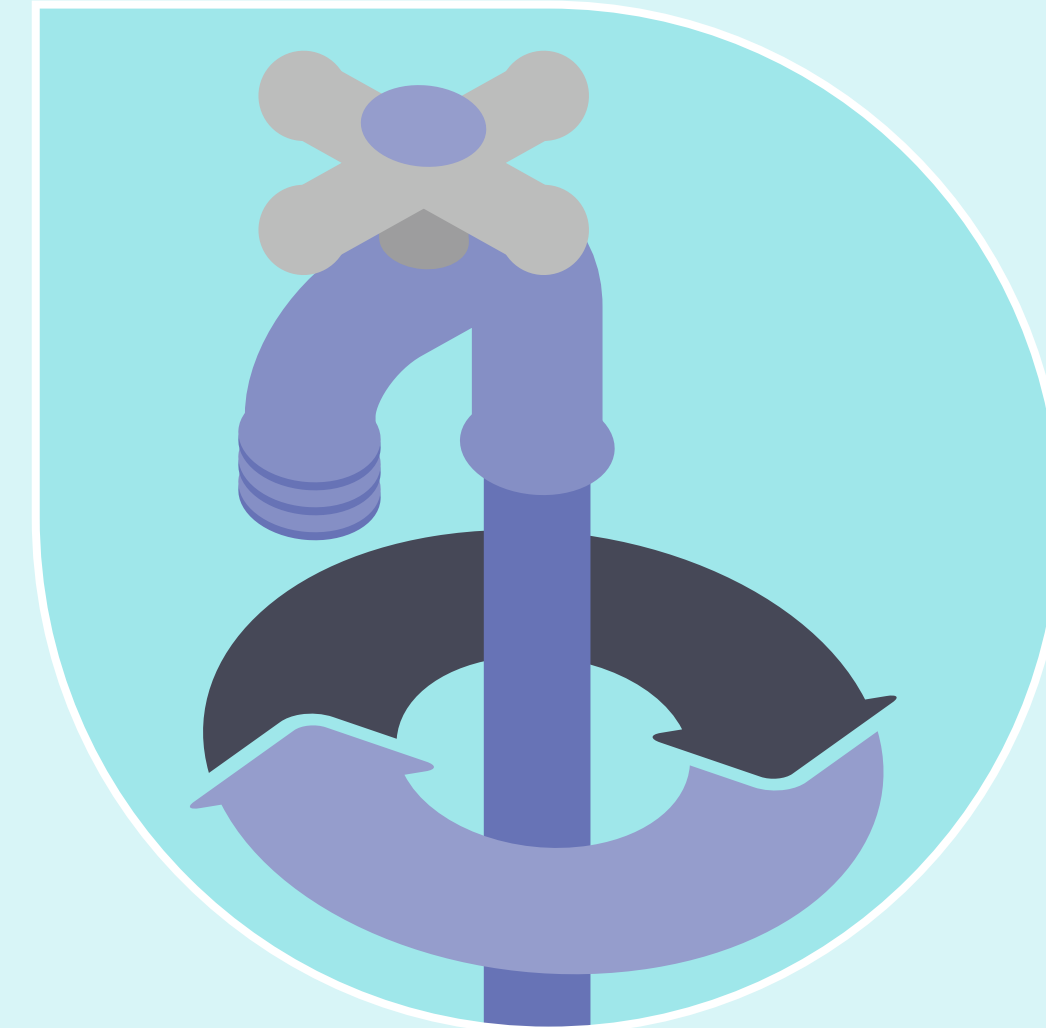
Stormwater  
available

**440GL**



Wastewater  
available

**443GL**



Estimate for 2013



# Better use of all our water

Mains water  
Rainwater  
Stormwater  
Wastewater  
Groundwater





# Better use of all our water

## Mains water

Drinking, kitchen and bathroom

Pumped from water catchments  
to local reservoirs to our taps

Existing infrastructure





# Better use of all our water

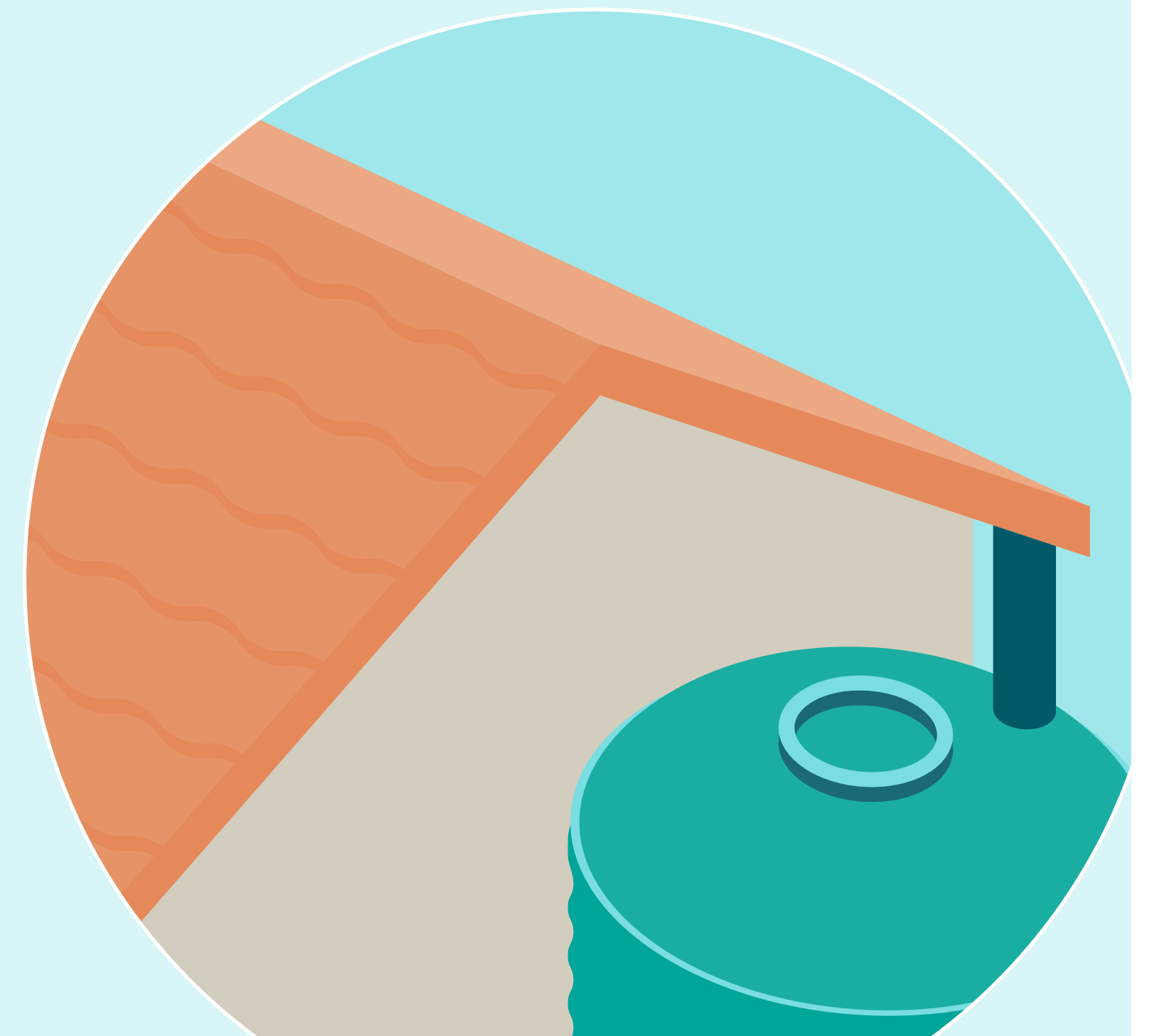
## Rainwater

Toilet flushing, clothes washing,  
gardening, car washing

Captured on our rooftops

Stored in onsite tanks

Building-scale measure





# Better use of all our water

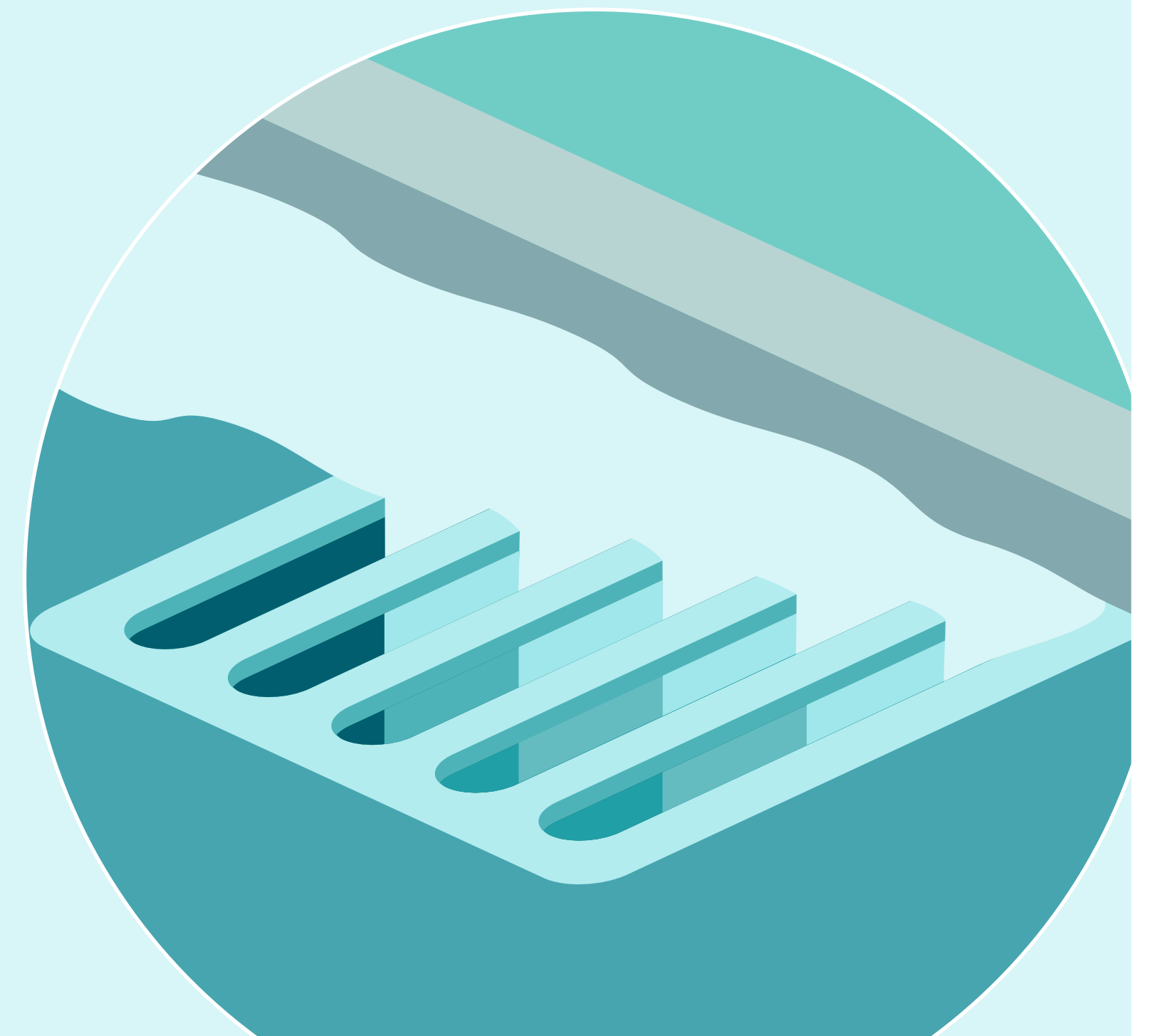
## Stormwater

Irrigation of parks and medians

Captured from roads and hard surfaces

Biofiltered

Stored in neighbourhood tanks



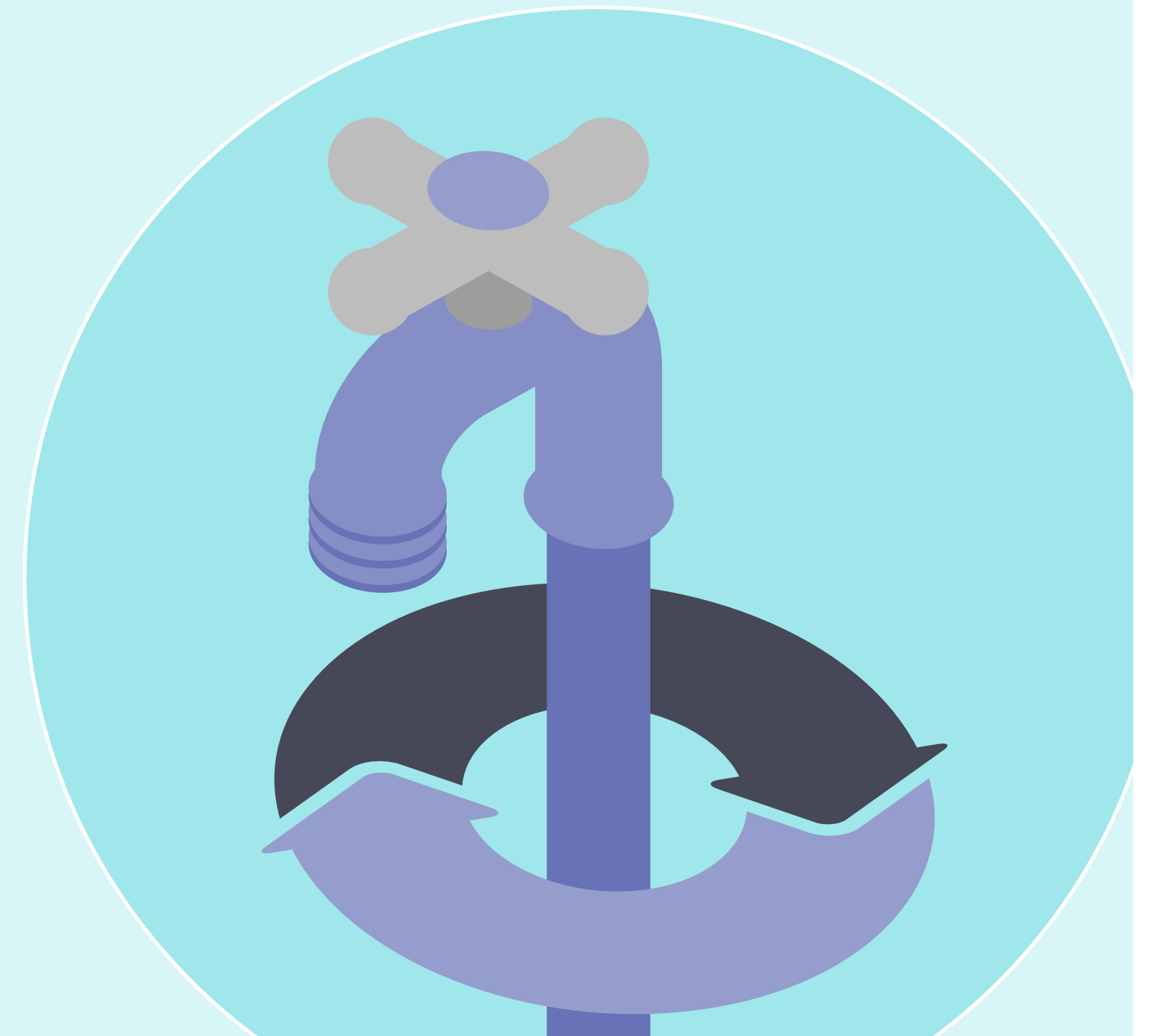


# Better use of all our water

## Wastewater

Business and industrial use

Recycled and treated to Class A  
standard for non-drinking purposes





A photograph of a man and a woman sitting on a grassy lawn in a park. The man, wearing a white t-shirt and dark shorts, is sitting on the left with a laptop open on his lap. The woman, wearing a red and white striped shirt, is sitting on the right. They are both looking away from the camera towards a large tree in the center. In the background, several other people are walking or standing on the grass under a canopy of green trees. A teal banner with white text is overlaid on the bottom left of the image.

# How we benefit

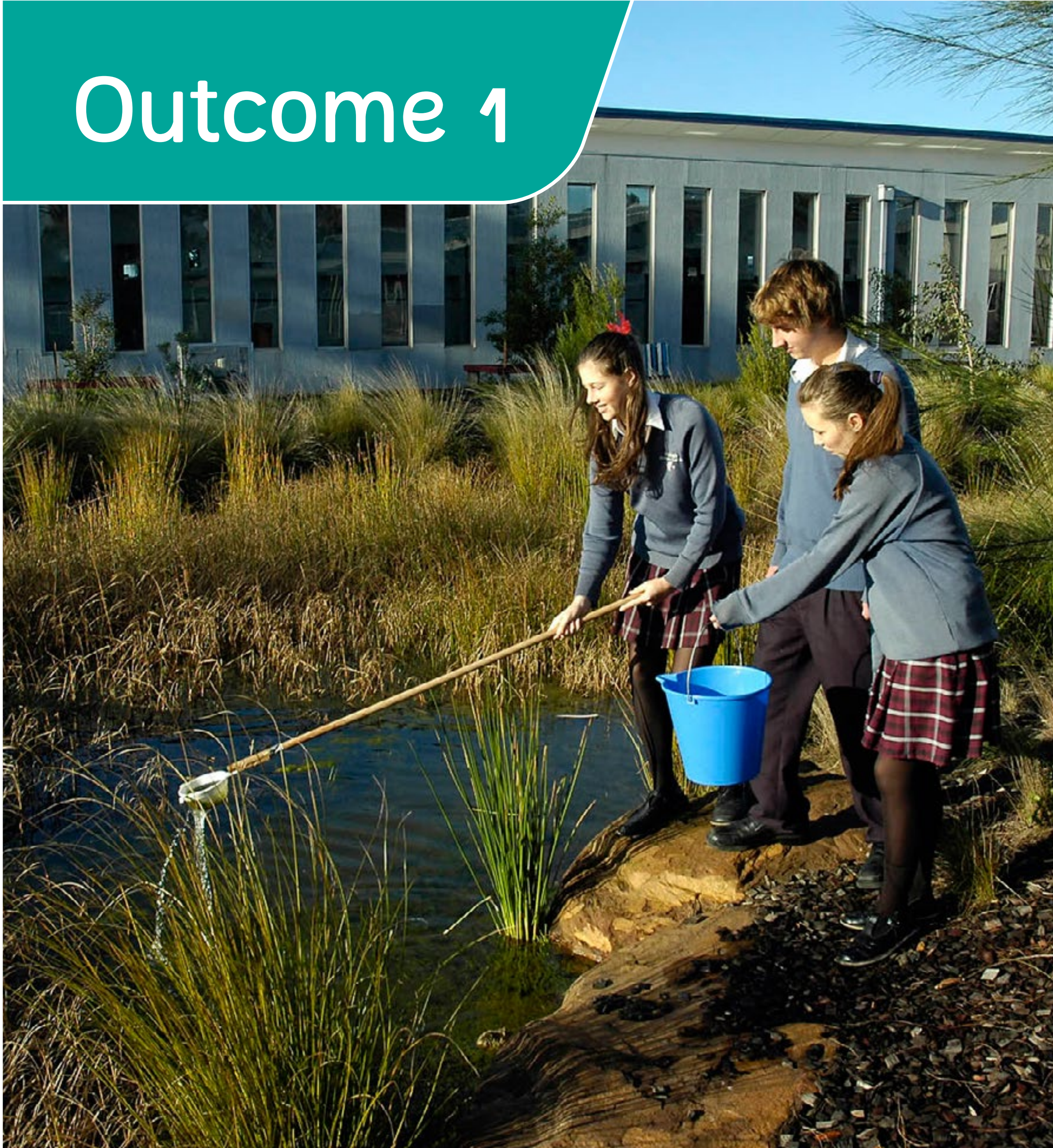


## Outcome 1

A community engaged  
in whole-of-water-cycle  
management



# Outcome 1



Award  
winner

## Bentleigh Secondary College

A whole-of-water-cycle  
approach has reduced  
drinking water demand  
by 91%

Image courtesy of Bentleigh Secondary College

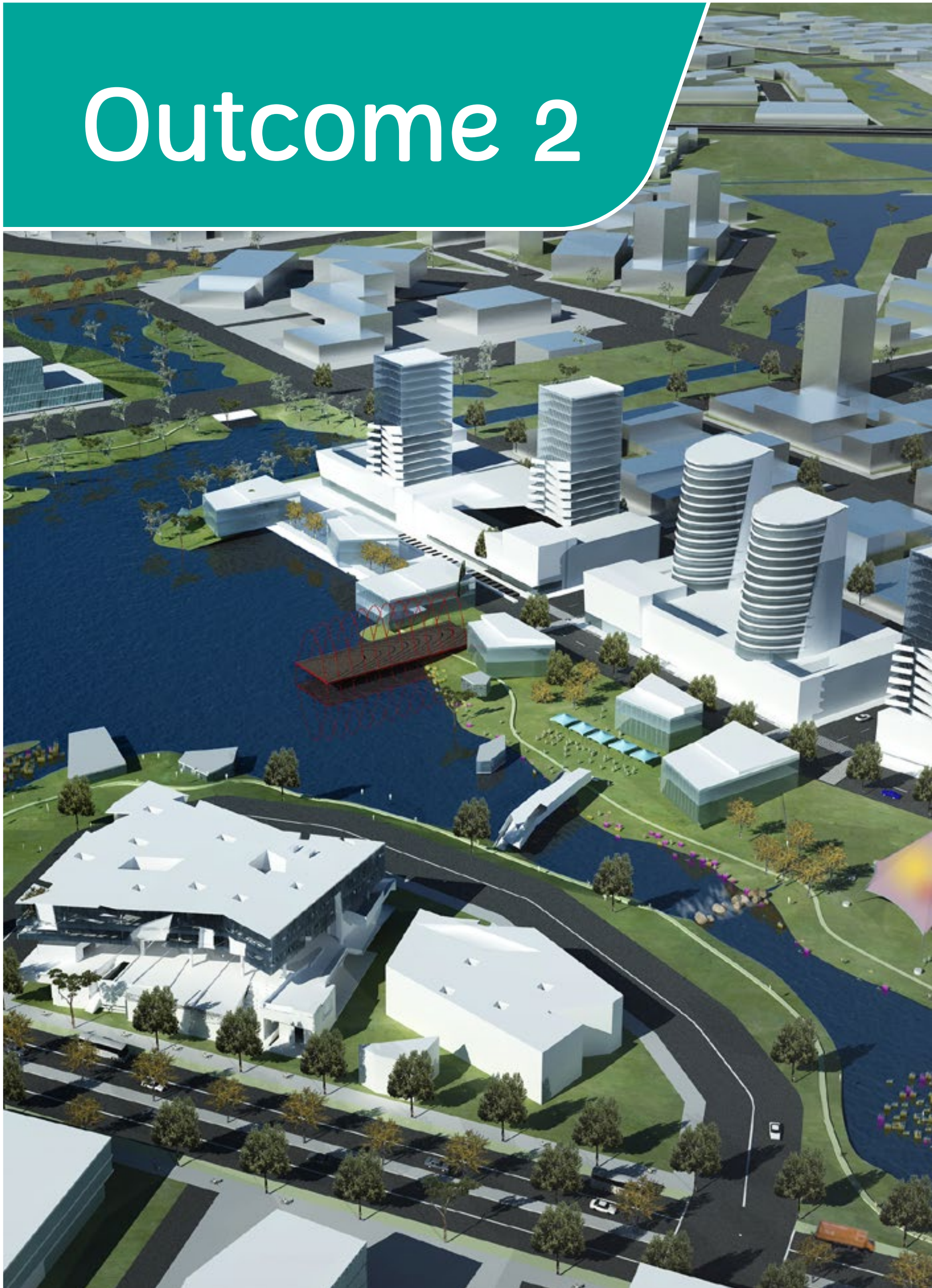


## Outcome 2

Suburbs designed  
with water in mind



# Outcome 2



## East Werribee Employment Precinct

- ▼ 60% drinking water demand
- ▼ 50% wastewater discharge
- ▲ 7,000 homes
- ▲ 50,000 jobs

Image courtesy of Growth Areas Authority



## Outcome 3

**Sensible use of water  
in our homes and  
businesses**



# Outcome 3



## City of Casey Recreation and Aquatic Centre

Uses no drinking water for filling or topping up

Image courtesy of City of Casey



# Outcome 3



## MCG and Yarra Park

Recycling local wastewater to flush toilets on match days



## Outcome 4

Resilient water systems  
that work well during  
flood and drought



# Outcome 4

Living  
Victoria  
Fund



## Albert Park Lake

Harvesting local stormwater to top-up the lake  
and reduce flooding in surrounding suburbs



## Outcome 5

# Healthy natural waterways



# Outcome 5



13ML  
daily



## Altona treatment plant and Port Phillip Bay

Diverting treated wastewater from the bay to local businesses

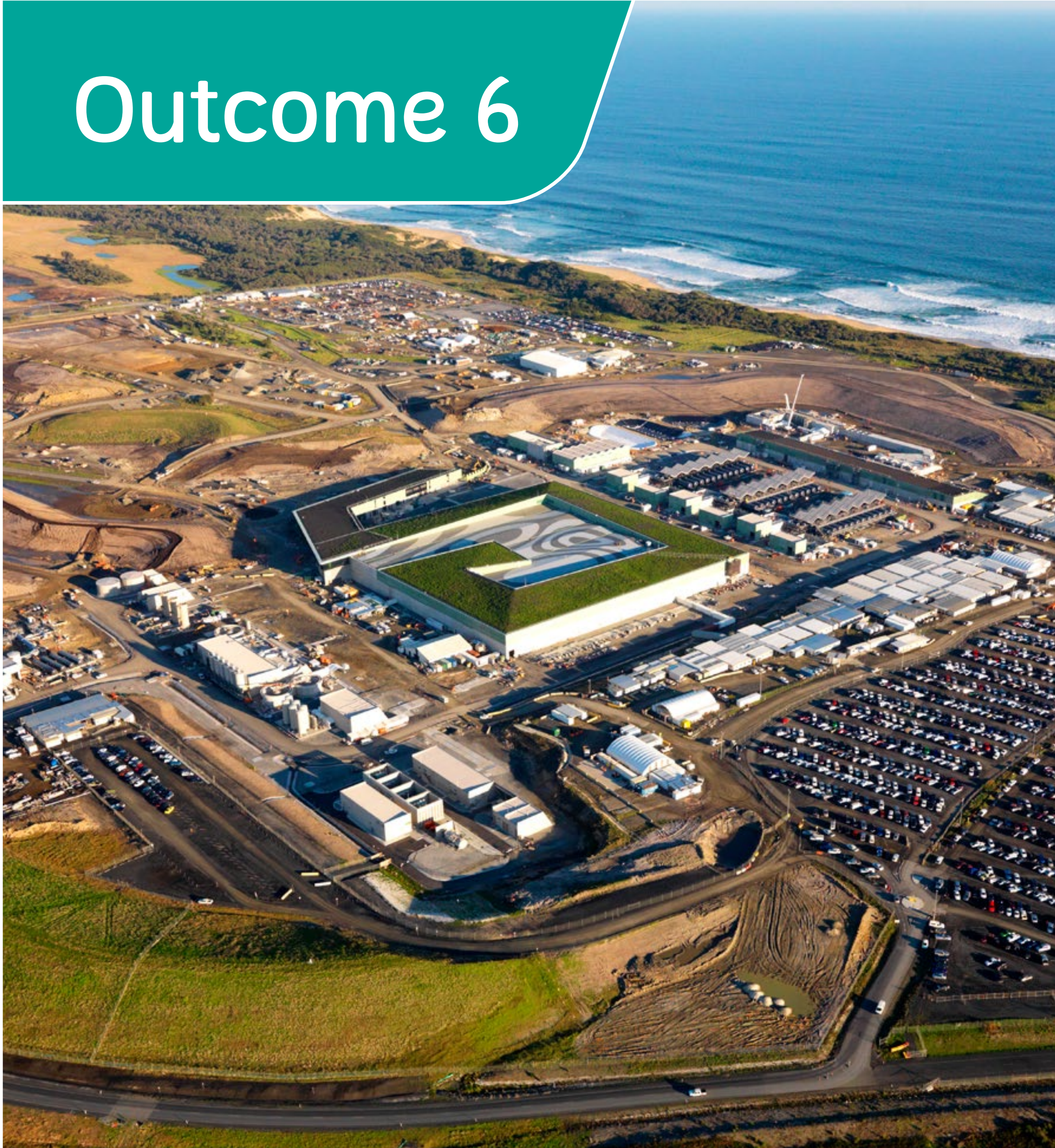


## Outcome 6

Reduced inefficiency  
and waste



# Outcome 6



## Desalination

Expensive to build

Expensive water

Two more by 2050?



## Outcome 7

Water innovation  
and world recognition  
of expertise



# Outcome 7



**Trailfinders Australian Garden**  
Chelsea Flower Show best in show  
Victorian innovation on the world stage

Image Getty



# Stay in touch

Subscribe

## livingvictoria.vic.gov.au

