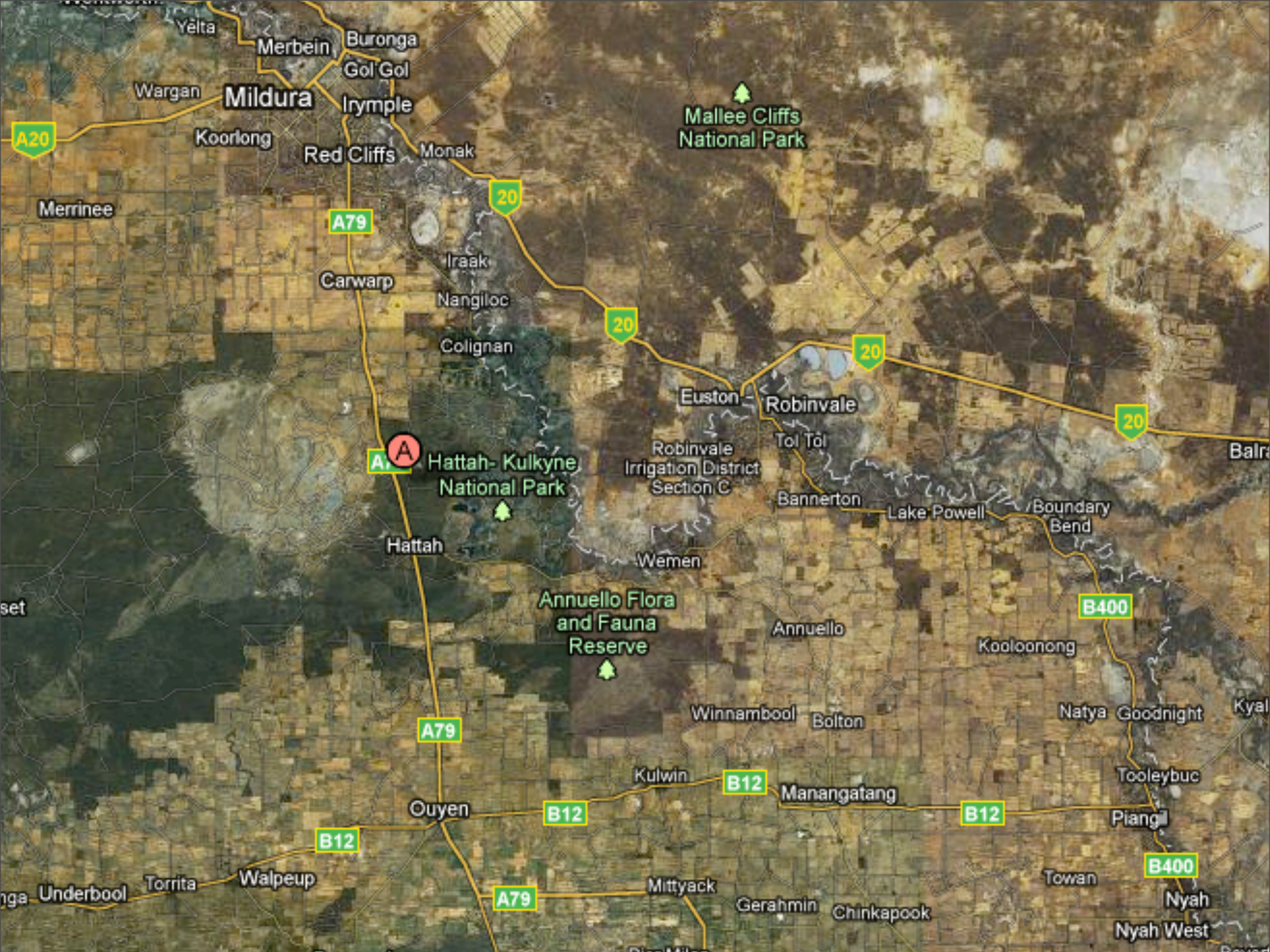


# THE CASTLE

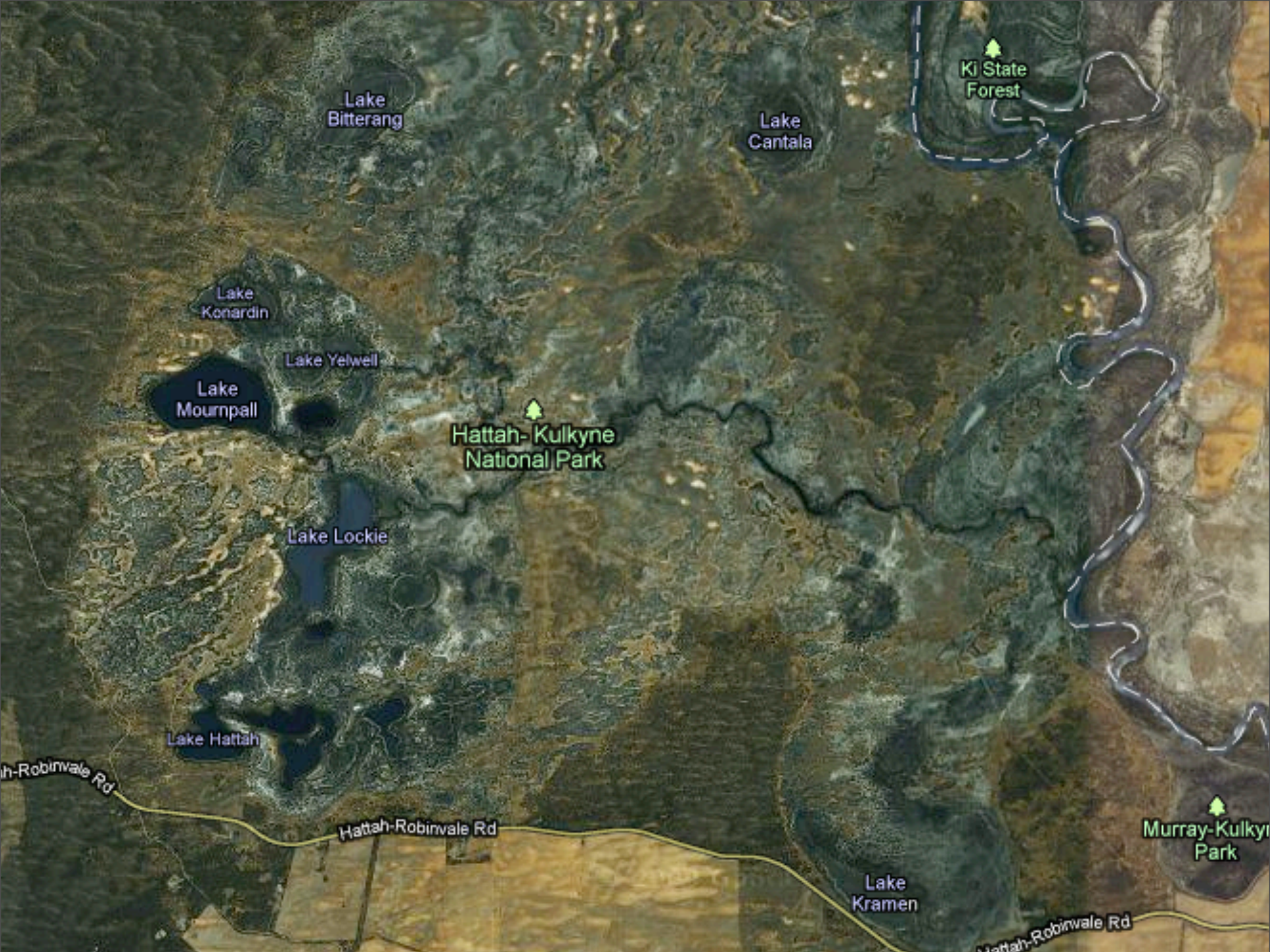


Tuesday, 6 August 13













Tuesday, 6 August 13



# The Whole Economy

GDP  
\$1223 billion

MARKET  
PRODUCTION  
\$875 billion

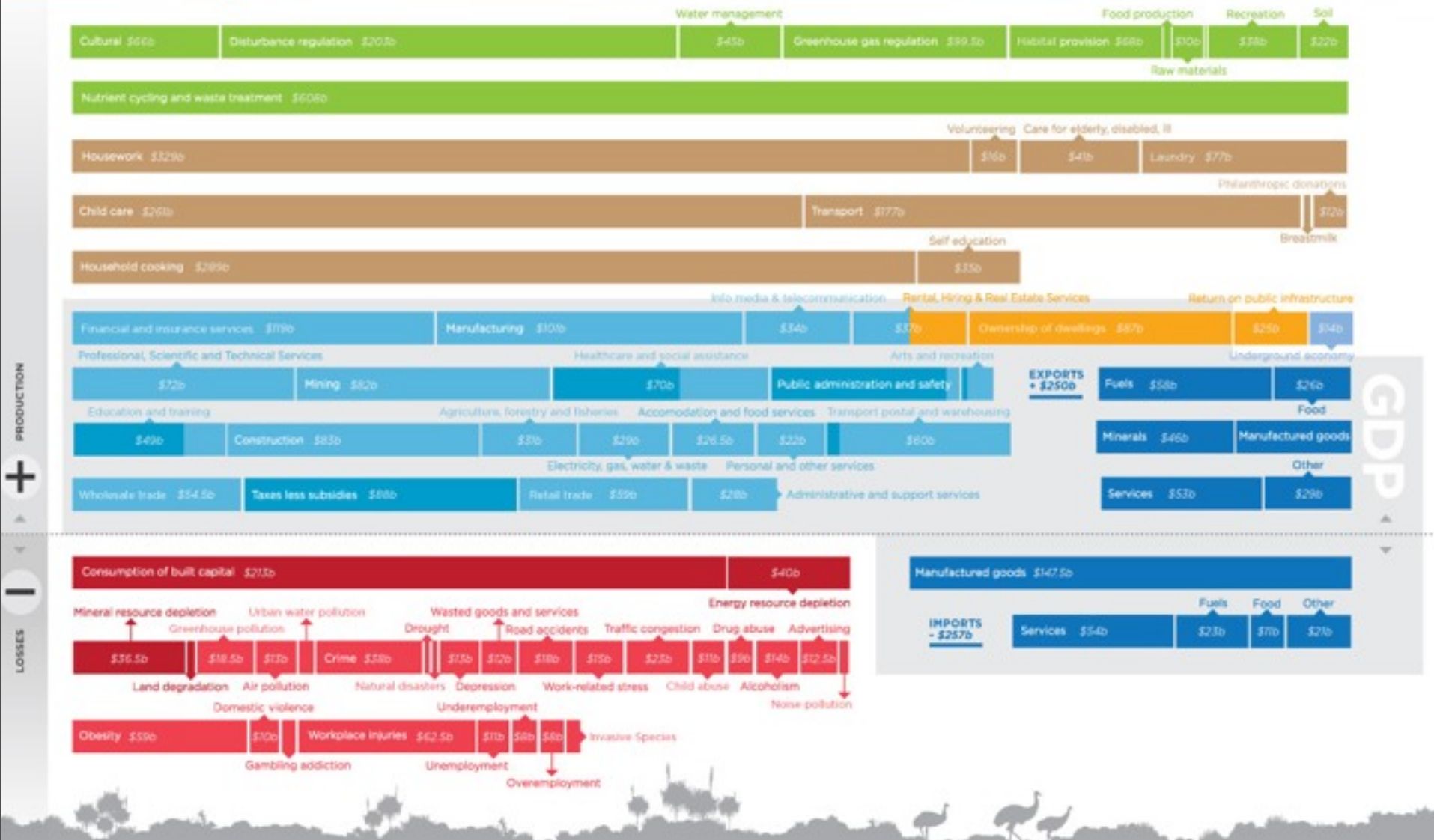
GOVERNMENT  
PRODUCTION  
\$229 billion

FIXED  
ASSETS  
\$129 billion

COMMUNITY  
PRODUCTION  
\$1270 billion

ENVIRONMENTAL  
PRODUCTION  
\$1164 billion

LOSSES



# The Whole Economy

GDP  
\$1223 billion



MARKET  
PRODUCTION  
\$873 billion



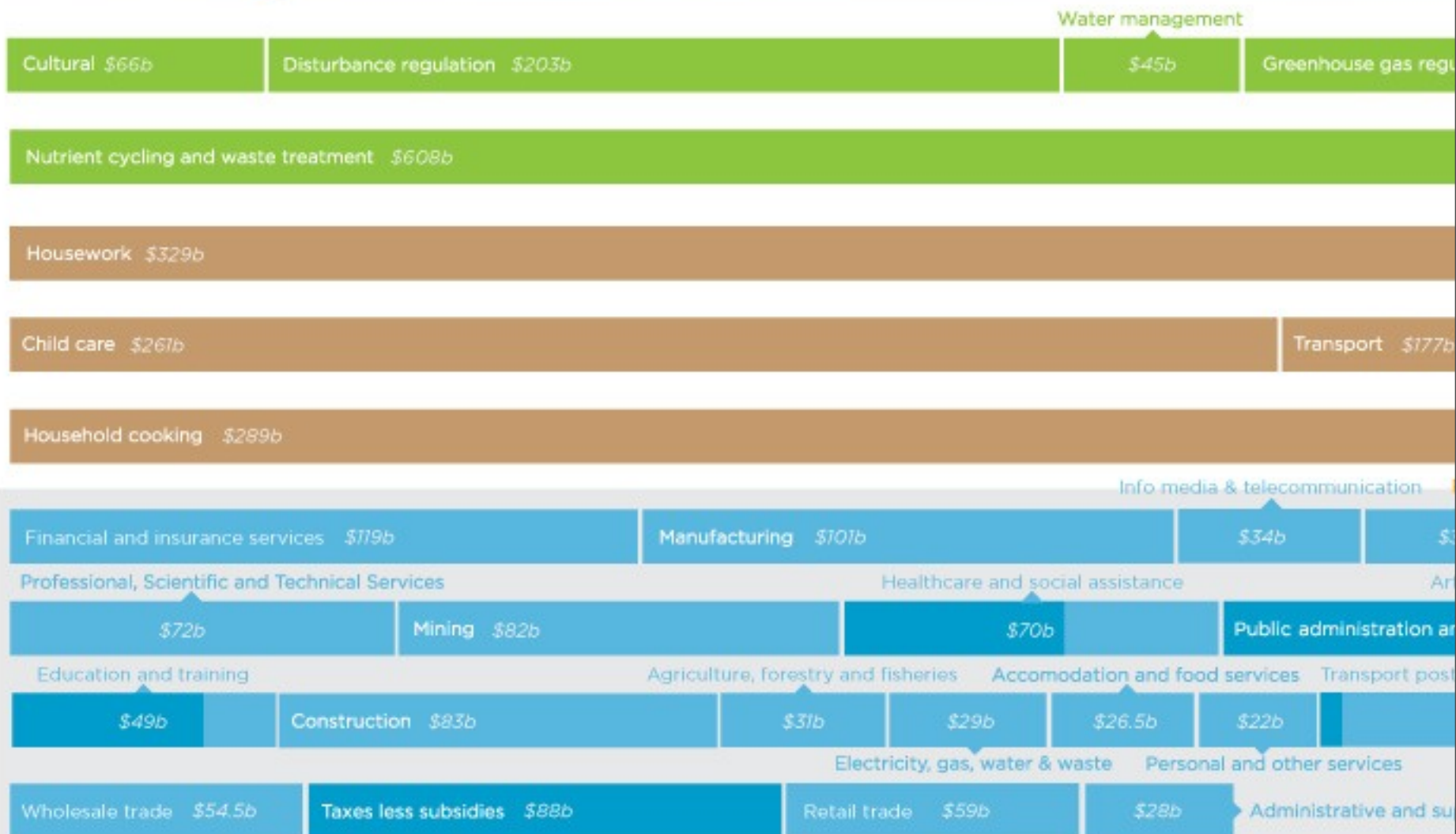
GOVERNMENT  
PRODUCTION  
\$229 billion



FIXED  
ASSETS  
\$129 billion



CONSUMPTION  
\$1223 billion





**GOVERNMENT PRODUCTION**  
\$229 billion



**FIXED ASSETS**  
\$129 billion



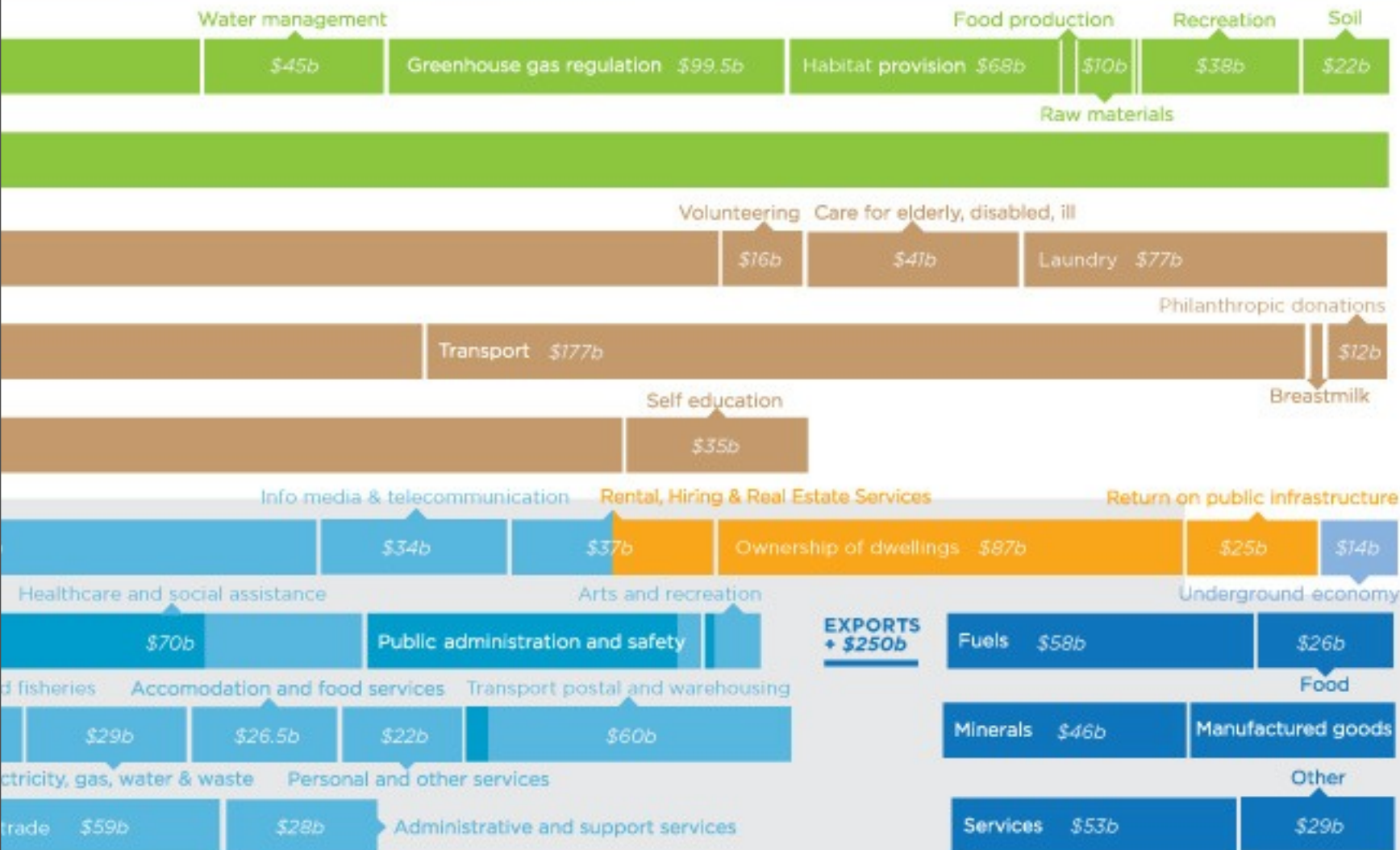
**COMMUNITY PRODUCTION**  
\$1270 billion



**ENVIRONMENTAL PRODUCTION**  
\$1164 billion



**LOSSES**



**GDP**



Household cooking \$289b

Info media & telecommunica

Financial and insurance services \$719b

Manufacturing \$701b

\$34b

Professional, Scientific and Technical Services

Healthcare and social assistance

\$72b

Mining \$82b

\$70b

Public administr

Education and training

Agriculture, forestry and fisheries

Accommodation and food services

Transport

\$49b

Construction \$83b

\$31b

\$29b

\$26.5b

\$22b

Electricity, gas, water & waste

Personal and other service

Wholesale trade \$54.5b

Taxes less subsidies \$88b

Retail trade \$59b

\$28b

Administrative

Consumption of built capital \$213b

\$40b

Mineral resource depletion

Urban water pollution

Wasted goods and services

Energy resource depletion

Greenhouse pollution

Drought

Road accidents

Traffic congestion

Drug abuse

Advertising

\$36.5b

\$18.5b

\$13b

Crime \$38b

\$13b

\$12b

\$18b

\$15b

\$23b

\$11b

\$9b

\$14b

\$12.5b

Land degradation

Air pollution

Natural disasters

Depression

Work-related stress

Child abuse

Alcoholism

Noise pollution

Domestic violence

Underemployment

Obesity \$59b

\$10b

Workplace injuries \$62.5b

\$11b

\$8b

\$8b

Invasive Species

Gambling addiction

Unemployment

Overemployment



AUSTRALIAN  
CONSERVATION  
FOUNDATION

All data represent the annual value to the Australian economy, expressed in 2009 Australian dollars.

For data references, methodology, and more about ACF's work on creating a better and more sustainable economy, visit [www.acfonline.org.au/neweco](http://www.acfonline.org.au/neweco)



# The Whole Economy

GDP  
\$1223 billion

MARKET  
PRODUCTION  
\$875 billion

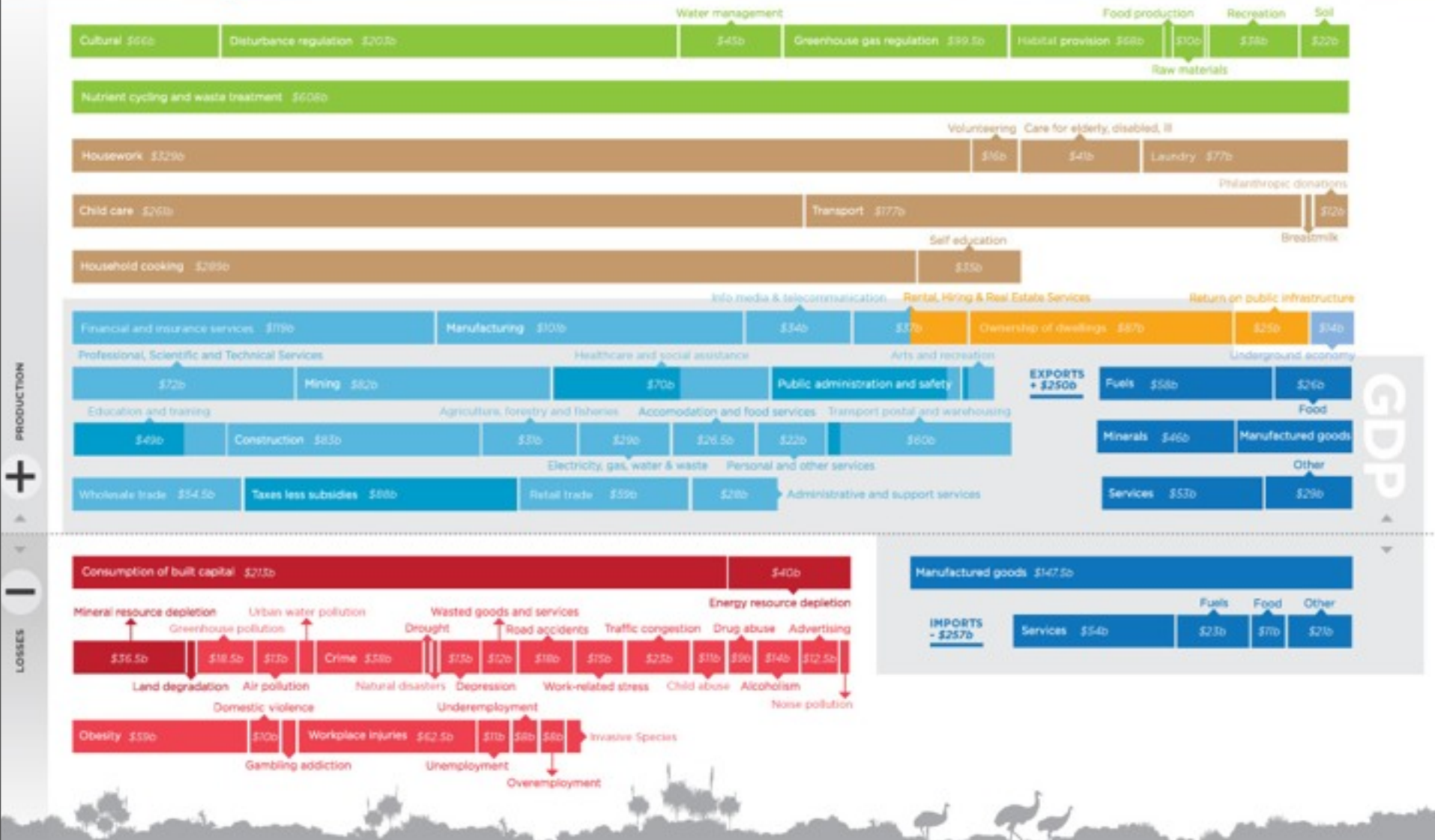
GOVERNMENT  
PRODUCTION  
\$229 billion

FIXED  
ASSETS  
\$129 billion

COMMUNITY  
PRODUCTION  
\$1270 billion

ENVIRONMENTAL  
PRODUCTION  
\$1164 billion

LOSSES















Tuesday, 6 August 13